

ISSN: 2329-8243 (Print)
ISSN: 2329-8235 (Online)

ARTICLE

CORROSION ASSESSMENT OF THE AA5754 PLASMA-MIG WELDING

Birgit Moench*

Department of Mechanical and Process Engineering, University of Kaiserslautern, Kaiserslautern 67663, Germany

*Corresponding Author E-mail: Birgitmoench@hotmail.com

This is an open access article distributed under the Creative Commons Attribution License, which permits unrestricted use, distribution, and reproduction in any medium, provided the original work is properly cited.

ARTICLE DETAILS

ABSTRACT

Article History:

Received 16 April 2018
Accepted 17 May 2018
Available online 21 June 2018

The microstructure of the automotive aluminium wrought alloys can be significantly modified by the high heat input employed during fusion welding techniques, such as the plasma metal inert gas (MIG) welding. Plasma-MIG welding of the AA5754 alloy using silicon-rich filler wire (AA4043A) results in the formation of a partially melted zone (PMZ) adjacent to the fusion boundaries. Partial melting of the Al-Fe-Mn-(Si) intermetallics at the partially melted zone, and segregation of the high melting point elements (particularly Fe and Mn) towards the fusion zone increase the open circuit potential difference between the weld and its adjacent partially melted zones. Consequently, severe galvanic corrosion attacks take place preferentially along the PMZ at each side of AA5754 weld during exposure to aqueous corrosion environments.

KEYWORDS

Microstructure, plasma-MIG welding, corrosion, partially melted zone, aluminium alloys.

1. INTRODUCTION

In the automotive industry, welding is one of the most critical elements of the body assembly process, which determines the structural integrity and quality of the vehicles being manufactured. The microstructure of the automotive aluminium wrought alloys can be significantly modified by the high heat input employed during fusion welding techniques, such as the plasma MIG welding. However, different from the heat treatable aluminium-alloys of the 2xxx, 6xxx and 7xxx series, the change in the mechanical properties of aluminium-magnesium based 5xxx alloys is not significant except for the cold worked alloys, where the mechanical strength can be slightly reduced [1]. There are, however, a number of corrosion issues associated with the formation of various weld zones through fusion welding of the automotive aluminium-magnesium alloys that may deteriorate the performance of the car body connections during service. One of the most critical defects induced by fusion welding, which may contribute to the loss of mechanical and corrosion properties, is the inhomogeneity near the fusion boundary. This phenomenon is often encountered in dissimilar welding of aluminium alloys, where filler metal of different composition from the base metal is used, or when two base metals of different composition are fusion welded together. In such a case, the chemical composition, microstructure and mechanical properties of the partially melted zone near the fusion boundary may differ significantly from the weld and the parent metals. The modification in the chemical composition of the partially melted zone relative to the base metal can be related to solute segregation during the initial transient of solidification, which has been frequently observed in various welds, including steel, stainless steels and aluminium alloys. The composition gradients through the base metal, partially melted zones and the fusion zone of the commercial 5xxx alloys, such as AA5754, are often caused by the rejection of high melting point impurities, for example iron and manganese, from the newly forming solid weld metal into the melt during the initial stage of solidification. This phenomenon,

in turn, is expected to modify the corrosion behaviours and, thus, the overall performance of these alloys during service [2].

2. EXPERIMENTAL

The weld samples in the present work were provided by Jaguar Land Rover in the form of a plasma butt weld made of 2 mm AA5754-O panels using AA4043A filler wire "as shown in Figure 1(a)".

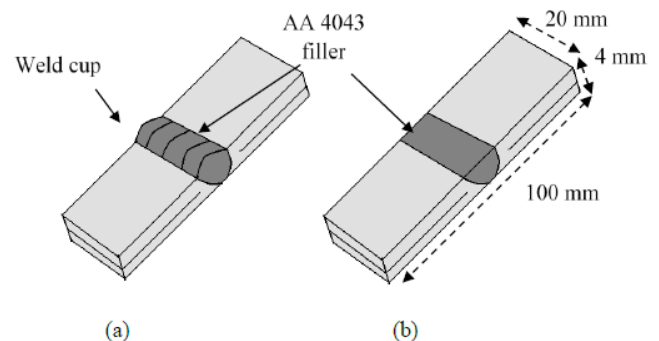


Figure 1: Schematic diagram of immersion test samples of the AA5754 plasma butt weld: (a) as received sample; (b) mechanically polished sample.

For metallographic examination, the investigated welds were first cross-sectioned, polished using conventional grinding and polishing methods followed by etching for 15-20 s at ambient temperature in Keller's

reagent solution (85 ml H₂O, 10 ml H₂SO₄ and, 5 ml HF) or 15 20 s of electro-etching at 20 V in Barker's reagent (4 ml hydrofluoric acid and 200 ml H₂O).

The influence of the welding cycle on the mechanical properties of the plasma welded alloys was investigated by conducting Vickers microhardness testing across the polished weld sections (parallel to the weld interface) using a Buehler microhardness tester unit. The microhardness measurements were performed using a 0.25 kg load with a 15 s dwell time [3].

For corrosion investigation, several 10 × 2 cm samples of the AA5754 plasma weld were cut. Further, in order to eliminate any possible interference of sample geometry with the immersion test results, and to simulate the final surface preparation (prior to painting) in the automotive industry, parts of cut AA5754 plasma welds were mechanically polished until the upper surface was completely flattened (the weld cup was removed), as schematically "shown in Figure 1(b)".

Prior to the immersion test, the transverse sections of the cut samples were mechanically polished to 5 μm finish, degreased, washed with water, rinsed with acetone, and then masked with a suitable chemically resistant lacquer (Iacomite solution), which was allowed to dry at room temperature for 48 h.

The localized corrosion behaviour of the AA5754 plasma welds was then assessed using a standard accelerated corrosion test in accordance to the G66 ASTM standard by a continuous immersion in a solution containing 1.0 M NH₄Cl, 0.25 M NH₄NO₃, 0.01 M (NH₄)₂C₄H₄O₆, and 0.09 M H₂O₂. The immersion test was conducted at 65°C ± 1°C in a one litre glass vessel and the solution temperature was precisely controlled during experiments by using a thermostatically controlled water bath [4].

After the immersion test, samples were directly cleaned with a mixture of methanol and deionized water in an ultrasonic bath for 2 min. Samples for study by scanning electron microscopy, to reveal the morphology and severity of corrosion attack, were cross-sectioned and mechanically polished to a 1 μm surface finish.

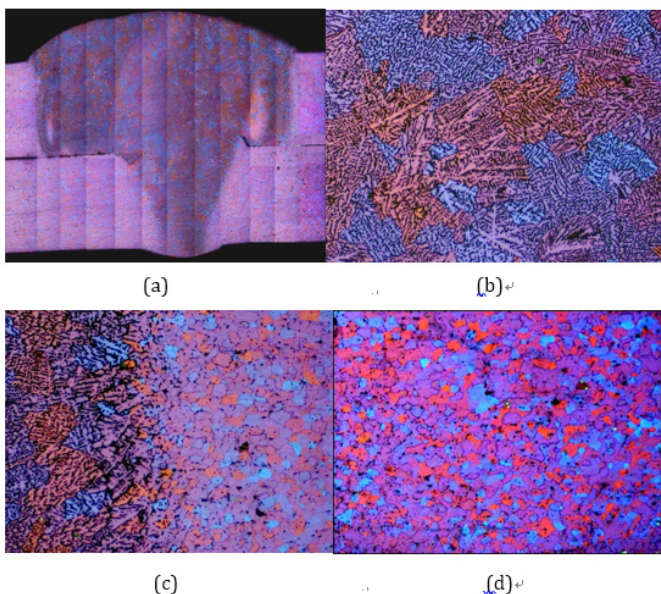


Figure 2: Optical cross-sectional micrographs of the plasma-MIG AA5754 weld after electro-etching at 20 V in Barker's reagent (4 ml hydrofluoric acid and 200 ml H₂O): (a) an overview; (b) fusion zone; (c) the partially melted zone; (d) the parent metal.

(1) The fusion zone

The fusion zone of the plasma-MIG weld is the region where the parent metal is completely melted and mixed with the filler alloy material. Upon cooling, solidification of the fusion zone takes place first at the partially melted or solid grains along the fusion boundary (i.e. at the solid-liquid interface). The growth of the solidified material then proceeds toward

the fusion centre (i.e. epitaxial growth opposite of the thermal gradient across the weld regions), resulting in the formation of a cellular dendritic Al-Mg-Si structure "Figure 3(b) and Figure 3(c)" of around 150 μm width along the fusion zone boundaries. As solidification continues toward the fusion zone, heterogeneous nucleation of new grains leads to the formation of a dendritic structure of equiaxed grains at the weld centre "Figure 3(d)".

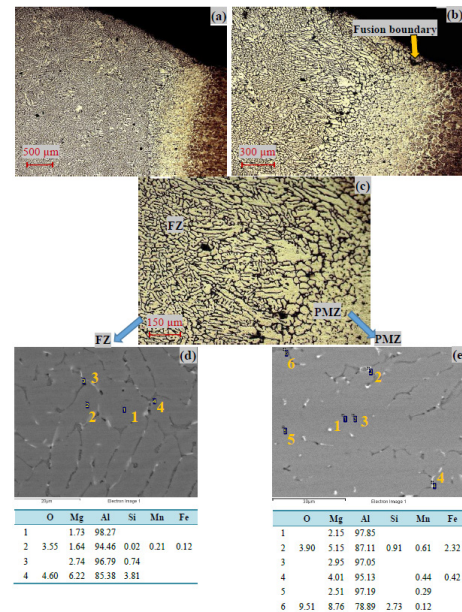


Figure 3: ((a)-(c)) Optical micrographs of increased magnifications of the partially melted zone in the plasma-MIG AA5754 weld after etching in Keller's reagent (85 ml H₂O, 10 ml H₂SO₄ and, 5 ml HF)); and ((d), (e)) back scattered electron micrographs and corresponding EDX spot analysis of the eutectic phases at the fusion and partially melted zones, respectively.

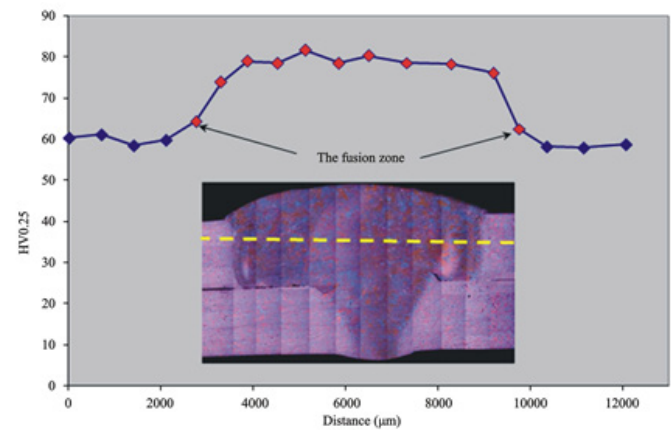


Figure 4: Vickers microhardness profile along the cross-section of the AA5754 plasma-MIG weld.

(2) The partially melted zone

Next to the fusion boundary of the AA5754 plasma-MIG weld, there is a partially melted structure of about 300 μm width "Figures 3(a)-(c)". The partial melting within this zone resulted in the formation of eutectic-phases at the grain boundaries of the parent material. The peak temperature in this region during welding is expected to exceed the equilibrium solidus or the eutectic temperature for the Al-Mg-Si eutectic constituents. However, the temperature across this region was not sufficient to fully dissolve phases containing high melting point elements (particularly those containing Fe and Mn). As a consequence, partial dissolution of Fe-rich constituents in this zone was detected "Figure 3(e)". Such phenomena may lead to the migration of undissolved solutes (solid state atomic diffusion) toward the fusion zones. In turn, this may cause severe variation in the chemical composition between the PMZ and the

adjacent areas.

(3) The parent metal

The parent metal adjacent to the partially melted zone of the AA5754 plasma-MIG weld showed no evidence of over-heating (e.g. excessive grain growth, dissolution or coarsening of second phase particles "Figure 2(d)" and/or softening "Figure 4".

3.2 Corrosion assessment of the aa5754 plasma-mig weld

The optical micrographs in Figures 5(a)-(d) show the appearance of the as-received "Figure 5(a) and Figure 5(c)" and mechanically polished "Figure 5(b) and Figure 5(d)" AA5754 plasma weld after room temperature immersion in an acidified/chloride solution for 24 h. In general, two types of localized attack were detected in the plasma welded samples, namely severe localized corrosion following the upper edges, and large deep pits randomly distributed over the parent metal.

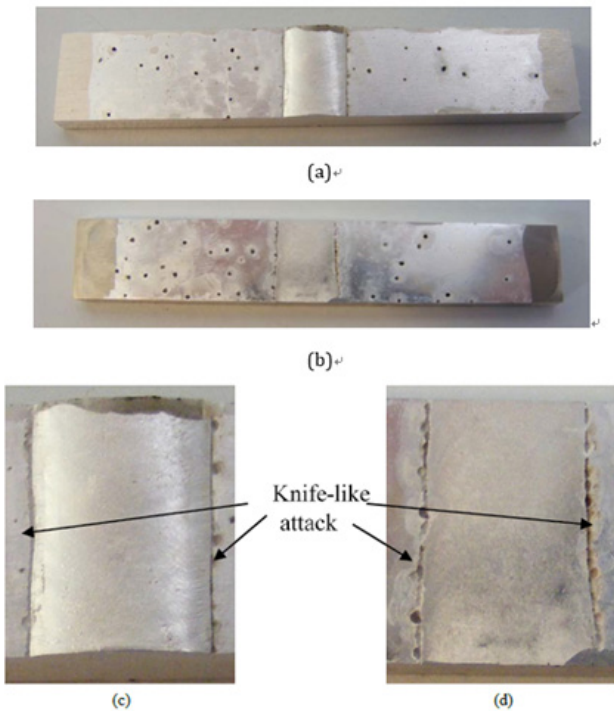


Figure 5: General view of the AA5754 plasma-MIG butt weld after 24 hours of room temperature immersion in an acidified/chloride solution: ((a), (c)) as-received; ((b), (d)) mechanically polished.

Based on its severity and shape, the first type of localized corrosion attack was identified as a "knife-like attack". Detailed investigation using scanning electron microscopy revealed that the knife-like attack was preferentially initiated and propagated more than 300 μm within specific areas just outside and parallel to the fusion zone "Figure 6(a) and Figure 6(b)". The preferential propagation of severe localized attack parallel to the AA5754 alloy weld can be related to the presence of a narrow partially melted zone within which high melting point elements, particularly iron and manganese, were ejected into the melt during the initial stage of solidification. This was evident from the microstructural analysis of the AA5754 plasma weld prior to the immersion test. Partial dissolution of Fe-Mn rich constituents in this region followed by segregation of iron and manganese towards the fusion zone cause severe composition gradients and, thus, potential gradients through the weld zones "Figures 7(a)-(d)". These introduce a galvanic corrosion susceptibility of the plasma welded 5754 alloy in corrosive environments. From the corrosion view point, the partially melted zone, which is more depleted in iron and manganese compared with the fusion and heat affected zones, is more prone to galvanic attack because its open circuit potential must be shifted to more negative values. Further,

the saturation of the fusion zone matrix with elemental silicon (from the 4xxx filler) normally shifts the open circuit potential to more anodic values. As a consequence, this area can be sacrificially corroded in the presence of a conducting, corrosive electrolyte, where the galvanic circuit elements are all established. Furthermore, in the immersion test, the exposed surface area of the PMZ is very small compared with the more noble adjacent areas; this means that the cathodic galvanic currents may be extremely high, which certainly enhance the severity of galvanic corrosion.

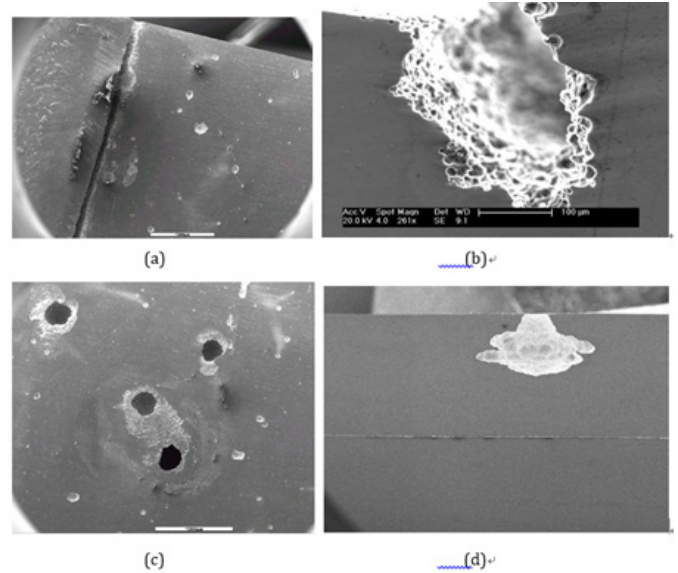


Figure 6: Top and cross-sectional views of: ((a), (b)) the knife-like attack at the weld edges; and ((c), (d)) severe pitting attack at the parent metal of the AA5754 at plasma butt weld after 24 hours of room temperature immersion in an acidified/chloride solution.

The second type of attack was detected only under areas covered with loose, white scale, which suggests that the scale build up over certain areas during the immersion test somehow initiates such localized corrosion. Based on these findings, the second type of corrosion was identified as "under deposit pitting attack". The severity of under deposit attack is better represented in Figure 6(c) and Figure 6(d), where a pit extended horizontally and vertically, and reached a final depth of approximately 1 mm. In this investigation, however, no evidence of any microstructural or chemical variations across the tested samples can be currently related to the initiation or propagation of the under deposit attack at the parent metal. Most probably, the scale deposition and, thus, the initiation of this attack are related to the local alkalinity around cathodic intermetallics at the samples surface.

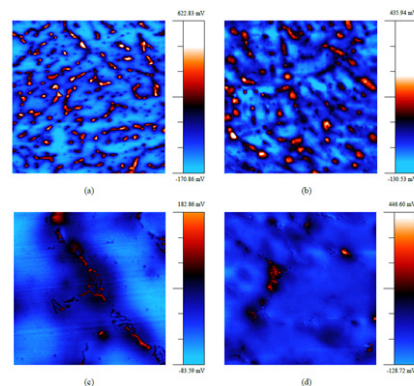


Figure 7: AFM mapping across the various weld zones of a polished AA5754 plasma-MIG weld: (a) the fusion zone; (b) the fusion/partially melted zone boundary; (c) the partially melted zone; and (d) partially melted zone/parent metal boundary.

4. CONCLUSION

Plasma-MIG welding of the AA5754 alloy using silicon-rich filler wire (AA4043A) results in the formation of a partially melted zone adjacent to the fusion boundaries. Partial melting of the Al-Fe-Mn-(Si) intermetallics at the partially melted zone, and segregation of the high melting point elements (particularly Fe and Mn) towards the fusion zone increase the open circuit potential difference between the weld and its adjacent partially melted zones. Consequently, severe galvanic corrosion attacks take place preferentially along the PMZ at each side of AA5754 weld during exposure to aqueous corrosion environments.

REFERENCES

[1] Kou, S. 2003. *Welding metallurgy*. 2nd edition. Wiley Interscience,

New Jersey.

[2] Mathers, G. 2002. *The welding of aluminium and its alloys*. Woodhead Publishing Ltd., Cambridge.

[3] Yang, Y., Kou, S. 2007. Mechanisms of microsegregation formation near fusion boundary in welds made with dissimilar filler metals. *Materials Science & Technology 2007 Conference and Exhibition*, Detroit, September 16-20, 329-340.

[4] Kou, S., Yang, Y. 2007. Fusion-Boundary macrosegregation in dissimilar-filler welds. *Welding Journal*, 86, 303-s-312-s.

